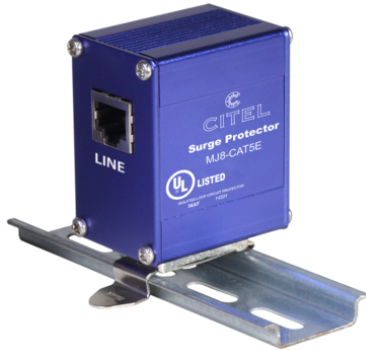
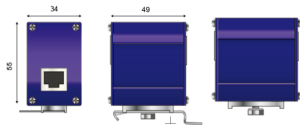


MJ8-CAT5E



- CAT5 networks surge protector
- 10/100/1000BaseT compatible
- RJ45 connector
- Shielded enclosure
- Bi-directional
- UL497B certified



Electrical Characteristics		
Network		Gigabit Ethernet (Cat.5E)
Max. DC operating voltage	Uc	8 Vdc
Max. frequency	f max.	> 100 MHz
Max. data rate		1000 Mbps
Insertion loss		< 1 dB
Max. load current	IL	1000 mA
Protection level (Following the test category C3 (IEC61643-21) - Line/Line)	Up	20 V
Max. capacitance	C	< 25 pF
Impulse current (2 x 10/350µs Test - D1 Category)	Iimp	500 A
Line/Line Nominal discharge current (8 /20µs Test x 10 - C2 Category)	In L/L	500 A
Line/Ground Nominal discharge current (8 /20µs Test x 10 - C2 Category)	In L/PE	2000 A
Mechanical Characteristics		
Technology		GDT+clamping diode
SPD configuration		4 pairs + shielded
Connection to Network		RJ45 shielded connectors female input/output
Format		Connector RJ45
Mounting		Mounting flange, Screw lug, DIN Rail
Accessory(s) provided		DIN rail adapter, screw, screw nut, earthing plate, countersunk screw, cable shoe
Housing material		Aluminium
Operating temperature	Tu	-40/+85°C
Protection rating		IP20
Failsafe mode		Short-circuit
Disconnection indicator		Transmission interrupt
Pinout		(1-2) (3-6) (4-5) (7-8)
Dimensions		See diagram
Weight		0.114 kg
Standards		
Standards compliance		IEC 61643-21 / EN 61643-21 / UL497 B / IEEE 802-3ab
Certification		UL listed
Part number		
560201		