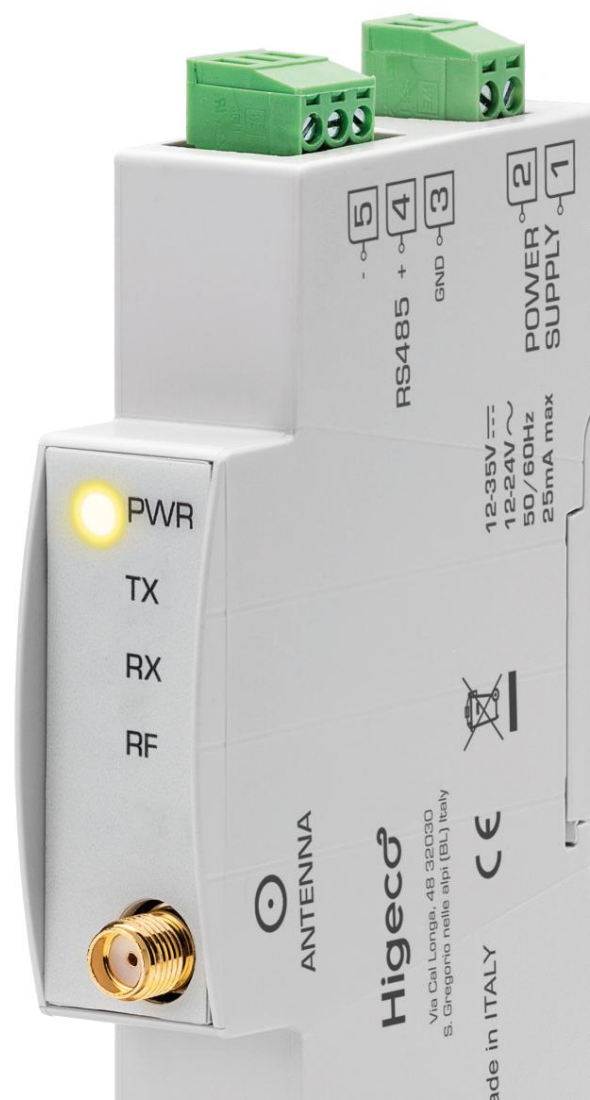




HLD

Module for data transmission with LoRa technology.



▶ **ADAPTABILITY**

Industry, Renewables, Energy

▶ **ROBUSTNESS**

Industrial grade hardware.

▶ **VERSATILITY**

Fixed or magnetic antenna

▶ **COMPACTNESS**

1 dyn. module

▶ **PLUG & PLAY**

Ready to install thanks to the powerful configuration software.



PRODUCT DESCRIPTION

Higeo LoRa Device (HLD) is a wireless repeater in LoRa technology (long distance) built to be used indoors. Thanks to the small size of just 1 DIN module, it is suitable for use in existing electrical panels. HLD natively supports the Modbus RTU protocol thanks to the RS485 communication port. The device is also transparent and can also be used with other communication protocols*. The communication range depends on the environment in which HLD is installed, typical values are in the order of one kilometer and more.

CHARACTERISTICS

Radio specifications	Frequency range 863 ÷ 870MHz
Diet	12-35Vdc / 12-24Vac ± 10%
Consumption	25mA Max @12Vdc
Antenna	1 x SMA connector
Communication	1 x RS485
Degree of protection	IP20
Operating temperature	-20°C ÷ +55°C
Dimensions	8.8 x 6.2 x 1.7 mm - 1 DIN module
Container	ABS



Download the datasheet

